

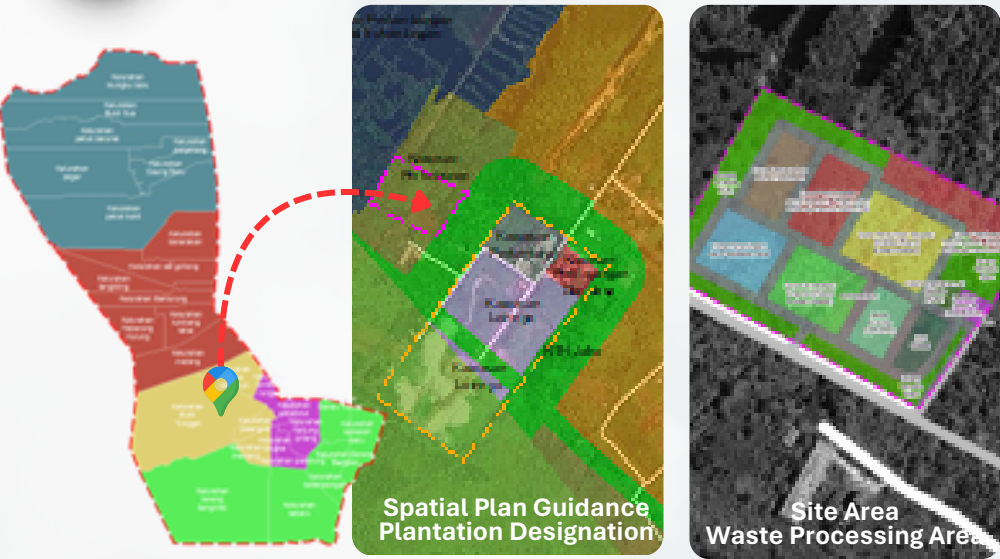


**IPRO**  
(Investment Project Ready to Offer)

**Waste Management**

in Central Kalimantan Province

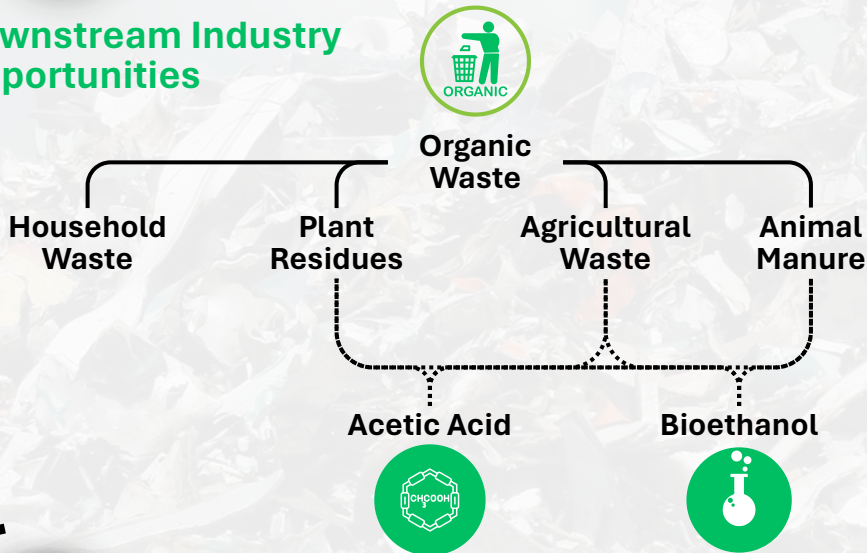
**PROJECT PROFILE**



- Location Name**  
Palangka Raya Km 14 Landfill
- Location Address**  
Tjilik Riwut Road Km 14, Bukit Tunggal Subdistrict, Jekan Raya District
- Total Area**  
2 Ha
- Land Status**  
Clean and Clear (Community-owned land)
- KBLI 38211**  
(Treatment and Disposal of Non-Hazardous Waste and Garbage)
- Commodity Type**  
Acetic Acid: **115.500 ton/year**  
Bioethanol: **49.500 ton/year**
- Project Advantages**  
Processing organic waste into high-value products
- Total Investment**  
**IDR 783.567.295.652**

**MARKET OPPORTUNITIES**

**Downstream Industry Opportunities**



**Supply**

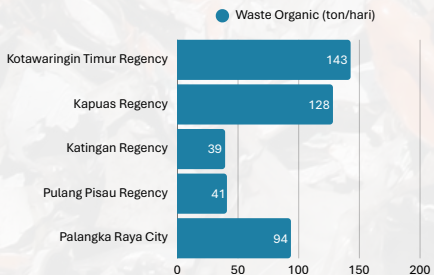
- Acetic Acid**  
The growth of the food and beverage industry, etc.
- Bioethanol**  
Abundant raw material availability
- Acetic Acid**  
Capacity of 22–27 million tons, dominated by the Asia-Pacific region
- Bioethanol**  
Exports to the Philippines, Japan, and Thailand

**Demand**

- Acetic Acid**  
Fertilizer (PTA), textile, and food processing industries.
- Bioethanol**  
Target of 1.2 million KL of bioethanol by 2030
- Acetic Acid**  
17–27 million tons (2023–2035)
- Bioethanol**  
Increase of 56% (2022–2027)

**TECHNICAL ASPECTS**

**Waste Processing Raw Materials**

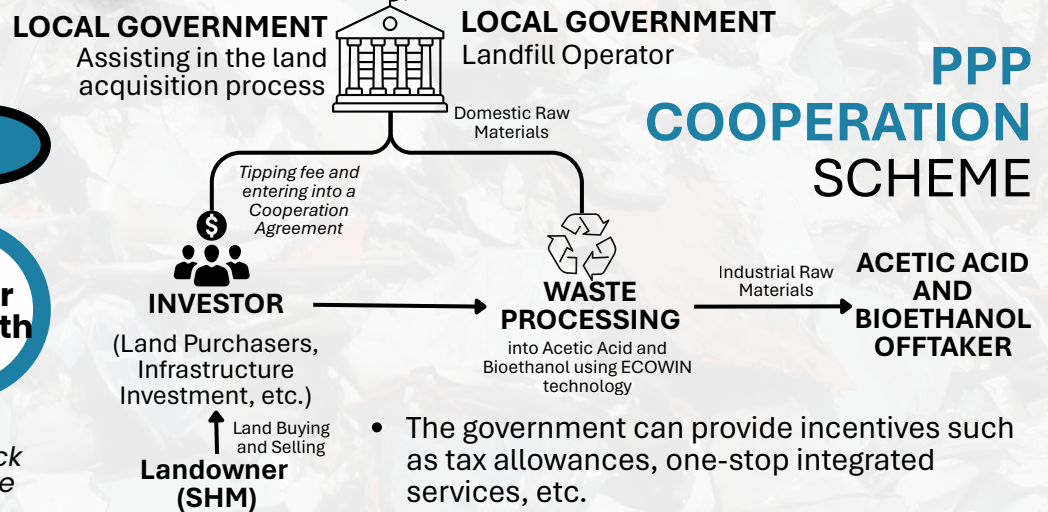


**Katingan Regency** Distance to landfill 14 km **32,47 km**  
**Putang Pisau Regency** Distance to landfill 14 km **59,43 km**

**INFRASTRUCTURE SUPPORT**

- The landfill location at Km 14 is connected to Tjilik Riwut Road, which has a carriageway width of approximately **6 meters**, and is accessible via a paved secondary road.
- The clean water demand can be met through bore wells around the site, with additional potential supply support from the local water utility (PDAM). The PDAM water treatment plant has a distribution capacity of **191.32 l/s** (2022).
- Served by the New Palangka Raya Substation with an electricity capacity of **150 kV**.
- Within a 3 km radius, there are **6 BTS towers**, and the main Tjilik Riwut Road is covered by a fiber optic cable network.

**GOVERNMENT SUPPORT**



**FINANCIAL FEASIBILITY**

